



MICROTORAI INCORPORATED

Innovating with Deep Intelligence

"Empowering Innovation with Secure AI & Cutting-edge Data Solutions."

Pitch Deck



**“EMPOWER, INNOVATE,
SUCCEED”**

About Our Company

Microtron is a leading technology innovator dedicated to transforming industries with groundbreaking AR/VR, AI, and IoT solutions. By harnessing advanced technologies such as blockchain, we empower businesses to streamline operations, enhance efficiency, and drive sustainable growth through the seamless integration of data and real-world applications. Our team of experts, supported by a robust R&D infrastructure and strategic partnerships, delivers tailored, end-to-end solutions across a wide range of sectors, including MedTech, AgTech, Education, Entertainment, and Defense. At Microtron, we are not just adapting to the future; we are creating it.





The Microtron AI business team is a dynamic and dedicated group of professionals committed to driving innovation and growth in the AI and advanced technology sectors.

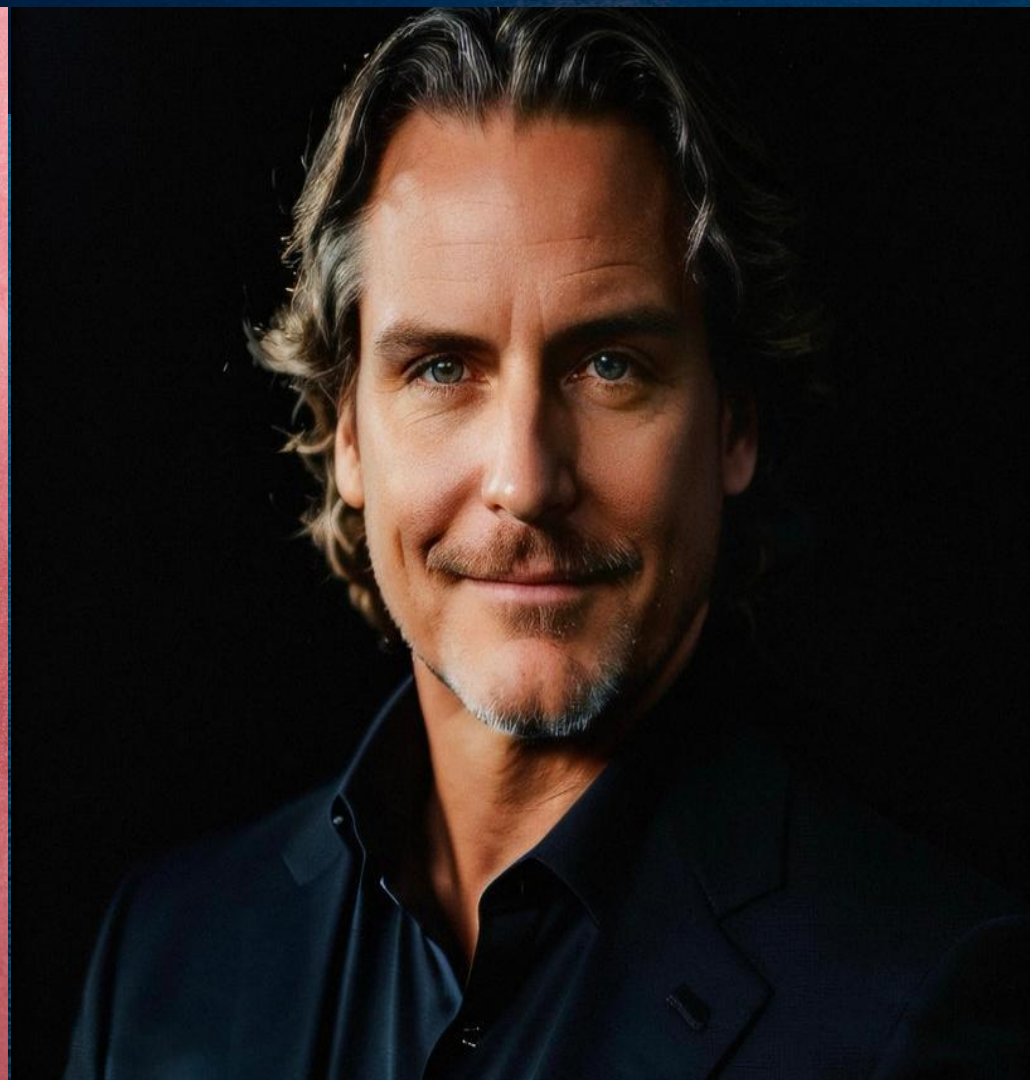
Super Team

CEO Bisa Peterson

COO Dr. Timothy M. Weil

CCO Delores Peterson

CFO Jeff Meiskin





Tech Team

The Microtron AI business team is a dynamic and dedicated group of professionals committed to driving innovation and growth in the AI and advanced technology sectors.

CMO Zach Roberts **CTO** Parker Bidigare **COE** Mitesh Vishwakarma **Sr. Data** Kyndall Fry **Dev.** Arslan Javed



The Problem

Microtron AI aims to solve the growing challenges of cyber-attacks, financial losses, and social injustice caused by vulnerabilities in the U.S. Smart Grid and the disconnection from public trust and safety. Our AI-driven solutions enhance security, resilience, and equity in critical infrastructure, ensuring safer, more efficient, and inclusive systems for companies and individuals alike. In Addition, Microtron AI is tackling the problems of inefficient healthcare, outdated education systems, and environmental degradation.

Civilian Safety - Ishield

As of 2024, mass shootings remain a significant threat, with increasing incidents reported across various locations, including schools, public spaces, workplaces, and religious institutions. These events often result in tragic loss of life and widespread fear, emphasizing the urgent need for effective preventive measures.

Conscious AI - Verse AI

Verse AI embodies a transformative approach to artificial intelligence, focusing on ethical frameworks and human-centric design to enhance social impact. By prioritizing transparency and collaborative intelligence, it aims to build public trust and ensure that AI serves the greater good.

Energy Consumption

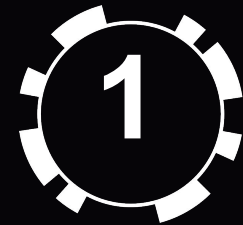
This section addresses the critical need to optimize energy consumption within the U.S. Smart Grid to promote sustainability and efficiency. Microtron AI leverages advanced analytics to minimize waste and enhance the integration of renewable energy, empowering consumers to make informed choices.

Sustainable Approach

Microtron AI is committed to sustainability through environmentally responsible practices that reduce ecological impact across sectors. By advocating for resource optimization and community engagement, the approach fosters a circular economy and enhances resilience against climate challenges.

About Verse MVOS

Microtron Virtual Operating System (MVOS): The Future of Digital Environments



Multi-Environment Compatibility:

Seamlessly operates across cloud, on-premise, and hybrid environments, providing flexibility for diverse business needs.



Advanced AI Integration:

Built-in AI-driven algorithms for data analysis, natural language processing, and predictive analytics, enhancing operational efficiency and decision-making.



AR/VR: Native support for AR/VR applications, allowing for immersive user experiences and next-generation.



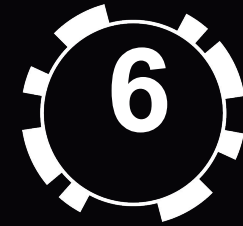
IoT Connectivity Hub:

Integrated Internet of Things (IoT) management tools for real-time monitoring, control, and data analytics of connected devices and sensors.



Blockchain Security Framework

Robust blockchain-based security protocols ensure data integrity, immutability, and secure transactions across all network layers.



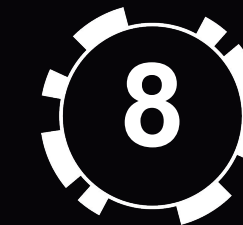
Modular Architecture

Highly modular design allows for easy customization and scalability, enabling businesses to add or remove features based on specific requirements.



Quantum Computing Readiness

Designed with quantum computing compatibility, preparing organizations for future technological advancements.



Integrated Development Environment (IDE)

Includes an advanced IDE for developers, supporting multiple programming languages, frameworks, and AI/ML model development.



OUR AI Solution

Our Offering - VERSE (Contextual Awareness Language Model)

- ±Spiking neural networks (SNNs) mimic real brain function by sending information only when a neuron's electrical charge hits a specific threshold.
- ±Traditional neural network neurons activate a lot more frequently causing more energy consumption. Chat GPT 4 costs 7,200 MW/h (Mega-Watts per hour) for 150 days to train the AI model, this will be greatly reduced with spiking neural networks.
- ±In reference, the average American household consumes 1,214 Watts of power per day.



Seamless Integration:

"Verse seamlessly integrates with your digital life, bringing everything together in one immersive environment, whether you're at work, at home, or on the go."



Hyper-Realistic Environments:

"Step into a world where virtual and reality blend effortlessly. Verse's hyper-realistic environments allow you to experience augmented and virtual reality like never before."



AI-Powered Personalization:

"At the core of Verse is an intelligent AI, constantly learning and adapting to your preferences, delivering a personalized experience tailored just for you."



Real-Time Collaboration:

"Collaborate in real-time with anyone, anywhere in the world. Whether for business or education, Verse breaks down barriers, making remote collaboration feel as if you're in the same room."

Wearable Integration:

"With Verse, your wearables come to life. The iShield and Sensaband integrate directly into the platform, giving you an unmatched immersive experience."



Digital Twin Technology:

"Introducing advanced digital twin technology. Monitor, simulate, and interact with real-world assets in virtual space, transforming the way you manage operations."



Advanced Recognition Tech:

"Verse's built-in recognition technology allows you to effortlessly navigate and interact with your environment, using only your voice and gestures."



Cross-Platform Accessibility:

"Verse is designed to work across all your devices, from mobile to desktop to wearables, ensuring a fluid experience wherever you are."



Verse + Sensables

Verse platform and Sensables work together to create a seamless integration between the physical and virtual worlds. Sensables collect real-time data from the user's environment and body, which is then processed and visualized within the immersive Verse ecosystem.



Target Market Opportunity



1. Healthcare and Dental:

Microtron AI's healthcare and dental offerings, such as the AI insurance modules and diagnostics support, are targeted toward medical and dental professionals. Systems will streamline patient management, claim processing, and appointment scheduling while utilizing AI to predict approval rates.

2. Education:

With immersive platforms like Nova Academy, Microtron AI focuses on enhancing the educational experience, especially for neurodiverse individuals. Wearables and AR tools are designed to make learning more engaging and personalized.

3. Wearable Technology:

Microtron AI aims at industries that require advanced wearables, such as healthcare, defense, and professional athletes. Products like iShield and Sensaband are designed to enhance human performance and safety.

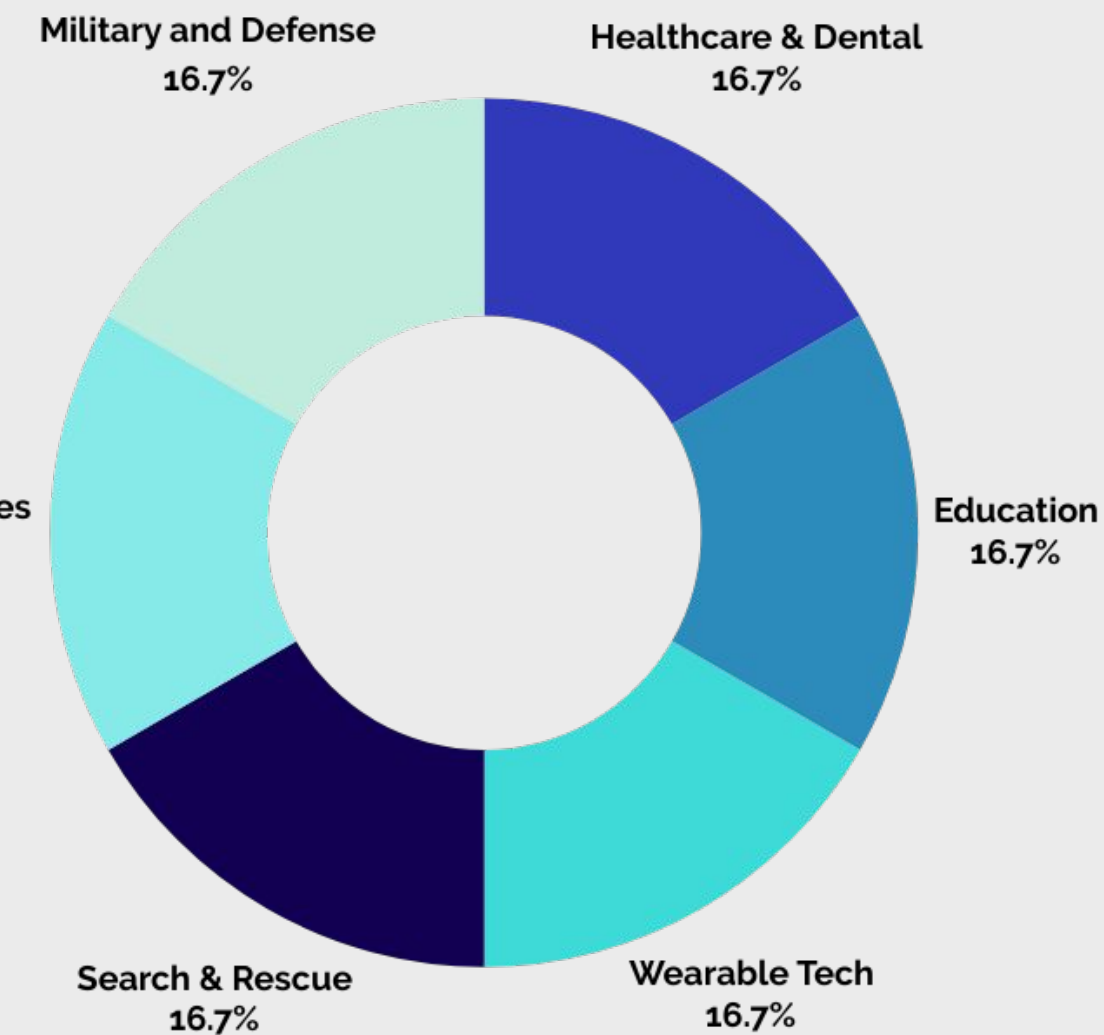
4. Search & Rescue:

Targeting emergency services, Microtron AI's drones and iShield wearable products are used in Search & Rescue operations, providing tools for real-time data collection and environmental monitoring during disaster recovery missions.

5. Augmented Reality and AI Integration for Enterprises:

Microtron AI provides AR and AI integration solutions to enterprises seeking to optimize operations, monitor real-time processes, and utilize digital twins. Offerings are aimed at industries like manufacturing, logistics, and enterprise management.

Augmented Reality and AI Integration for Enterprises
16.7%



6. Military and Defense:

Microtron AI's products, including drones and wearables like iShield, are targeted at the defense sector. These tools offer enhanced safety, real-time surveillance, and operational support for military applications.

Comparison Analysis

AI/AOT/AR

Operational



	WEARABLES	ARTIFICIAL INTELLIGENCE	AUGMENTED REALITY /HYPER	REMOTE SENSING / RECOGNITION	OPERATING SYSTEM / ROBOTICS
META	AR Headsets ✓	AI Driven Spatial ✓	AI Driven Spatial ✓	AI Driven Spatial ✓	AI Driven Spatial ✓
SAMSUNG	✓	✓	Augmented Reality - No Hyper	✓	✓
Apple	Air Pods, Apple Watch ✓	Siri & AI/ML ✓	AEKit, AR glasses No Hyer Reality	Face ID, Object Recognition ✓	iOS, macOS, watchOS ✓
Magic Leap	AR Headsets ✓	AI Driven Spatial ✓	✓	Visual and Spatial ✓	Custom OS for their devices ✓
Microsoft	HoloLens, Wearable Sensors ✓	Azure AI, Cortana ✓	HoloLens No Hyper Reality	Azure Cognitive Services, facial recognition ✓	Windows OS, custom OS for HoloLen ✓

OUR PARTNERS MICROTRONAI



Future Plans

1. Plaid Drone 4.5 Million Defense Contract
2. Updates to Verse (CALM) AI
3. Generation 2 of Wearables: Iview, Halo, and Ishield +
4. Browser / Search Engine
5. Neuro Horizon AR Courses
6. NOVA Academy (Neurodivergent Opportunities and Virtual Advancements) 5 Mil
7. Versity - Hyper Reality Higher Learning Courses
8. Project MUSE - FEMA Crisis Response Plan
9. HexoFlex - Extreme Sports Wearable Collection
10. Ayala - Nano-Engineering Biomaterials
11. Lectro EEG Headset
12. SWARM: Heat Hawk R&D | Raptor 7 R&D
13. Humanics / Humanoids

OUR AI JOURNEY



January 2023

Stage 1 Analytics

- PAD Desktop Beta Version
- MSSN - Data Crawler
- Api's - Recognition
- Aether AI Lab
- PAD Simulation November - April 1
- Collected Data and Trained the Neuro Network

Stage 2 Logics

January - November 2024

- Interfaced with Hugging Face
- Implemented Verse Framework
 - Verse Demos
 - Built VERSE Desktop
 - Built 3D QR Code Scanner
- First Release of 3D Virtual World with our Integrated AI Services
 - SNN
- Liquid Neural Networking

Stage 4 Applying Behavior

January -December 2026

- UAV Machine Learning Integration
- Geospatial AI
- Released Verse 3.0, which incorporates real-time personalization of the virtual environment based on user preferences, data, and AI insights. This creates adaptive virtual spaces that change based on user emotions, work habits, or personal goals.

Stage 3 Neurological Feedback

March - December 2025

- Add world building capabilities for collaboration both professional and for leisure.
- AR glasses that can be integrated into verse as a electronic device that can supplement with your computer or smart phone or work as a standalone device.
- AI enabled Patient and Insurance Portal
- Developed AI-driven digital assistants for businesses that combine voice, vision, and natural language processing, making them capable of handling complex tasks

Cognitive AI

January - December 2027

- R&D in future techniques and technologies for advanced AI neural network models along with algorithm developments towards AGI and this will be our foundations for working towards a safe version of ASI in a controlled environment.
- Begin pushing the boundaries of AI towards Artificial General Intelligence (AGI).

January 2028

Emotion AI

- Roll out biometric integration with wearables.
- Allow users to seamlessly interface with their virtual environments using body movements, brainwave readings, or voice commands.
- This deepens the connection between physical and digital worlds, reducing the gap between user and virtual action.

January 2029

Humanics

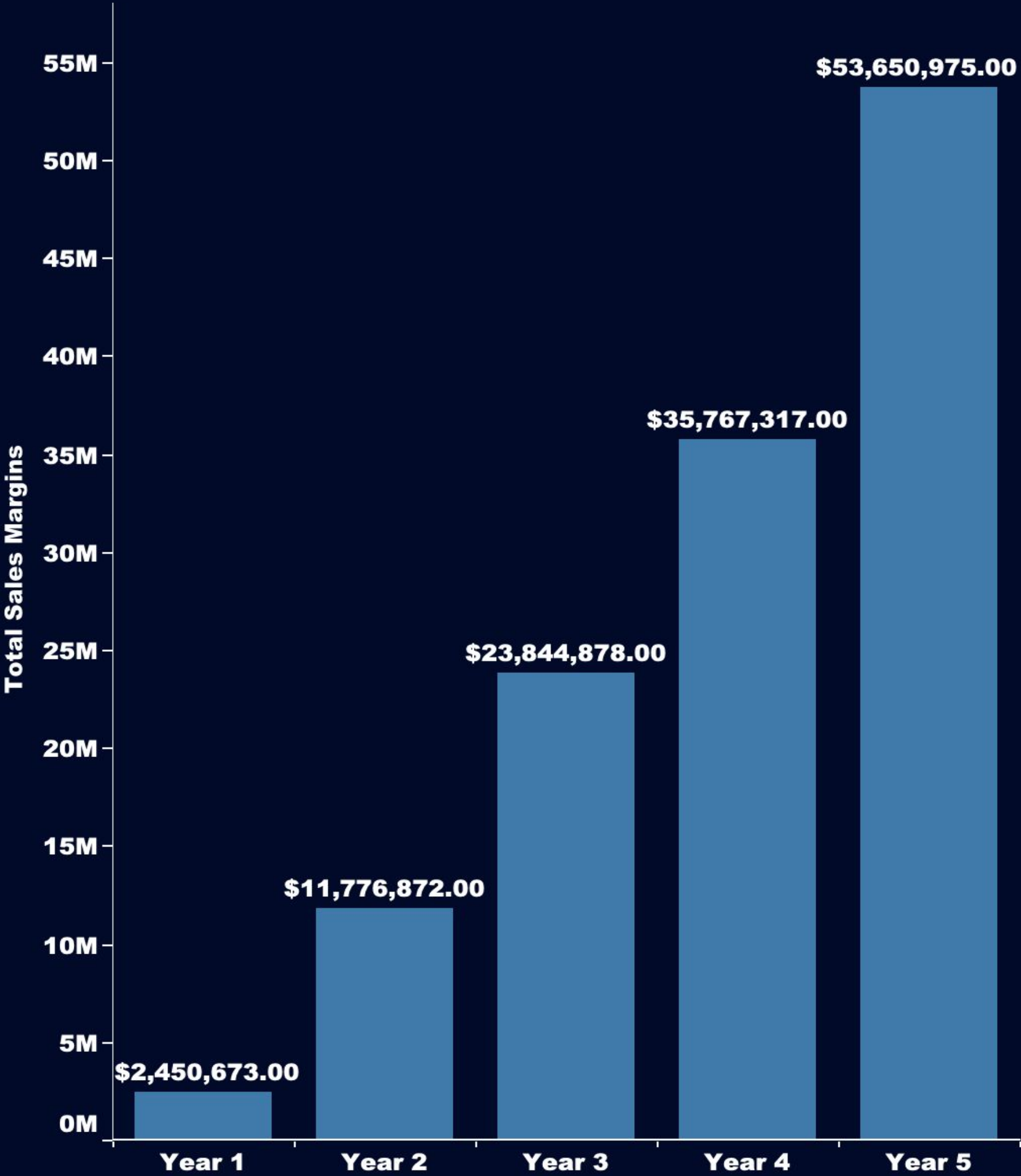
Microtron AI's technology embedded as a core part of global digital infrastructure, driving essential services like healthcare, governance, and education with autonomous AI systems

Financial Projections Year 1 - 5

Total Sales Projection: \$166,371,679

Unit Sales Projection: 371,840

Not including: DoD & Federal Contracts



Microtron AI Traction

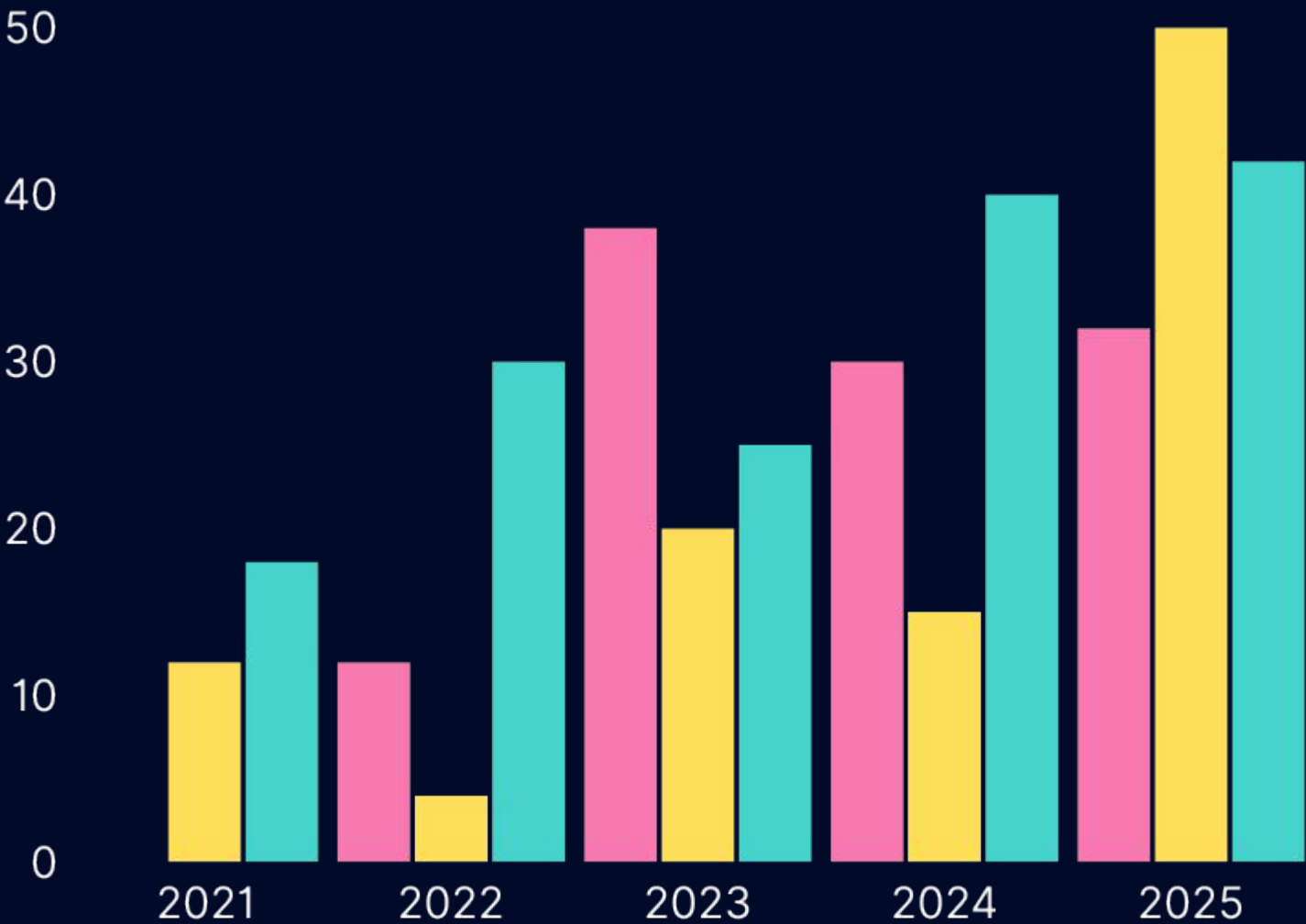
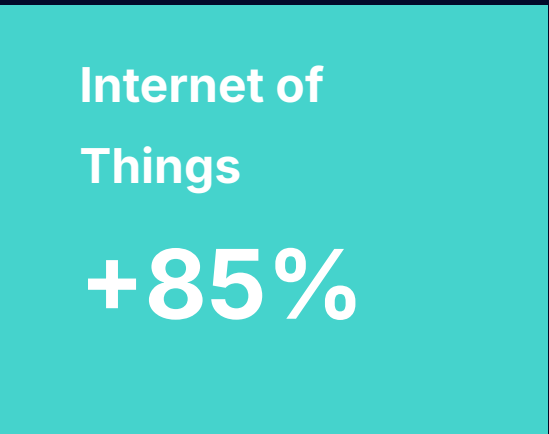
Product Launches: Successfully launched *Verse MVOS*, *Sensaband BCI*, *ExoFlex Watch*, *Halo Lens (R&D)*, and *Versona AI Assistants*, generating early adopter interest across healthcare and education sectors in under 8 Months.

Revenue Growth: Active revenue streams across contracts and pilots in defense, healthcare, and immersive education. Strong B2B pipeline positioning the company for a 7-figure annual revenue.

Strategic Partnerships: Collaborations established with Divine Design Studio, The World’s Mayor Experience, FEMA Search & Rescue, and MyHappyGenes, each integrating Microtron AI technologies into their operations.

Market Penetration: Rapid expansion into wearable tech and smart display systems with white-label discussions underway for international distribution of branded AI wearables and sensors.

IP Development: Proprietary systems like *Verse Speech*, *Verse Desktop*, and the digital twin framework are attracting licensing interest from SaaS platforms and OEM manufacturers.



The Investment: Use of Funds

Microtron is looking to raise \$18 Million.

12 Percent Equity - Across All Divisions

Series B Investment

Quarter 2 - 3 2025

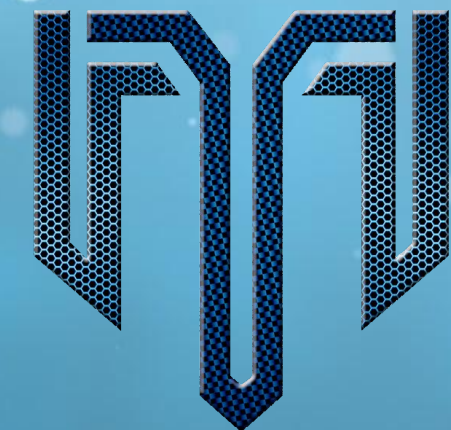
- \$500,000 will go toward gaining access to an Airforce Patent (Self-Training Neural Network)
- Onboard a 3D modeling team for in-house Versona Design
- Invest in R&D to create Verse 2.0 - A (CALM) Contextual Awareness Language Model
- Onboard new staff for day to day operations
- Invest in a physical location (Tampa Bay)

Quarter 4 - 2025

- Develop IShield Body Camera
- Develop IView w/ Digilens
- Buy Nvidia Chips
- Save cash for monthly expenses along with conserving the burn rate



THANK YOU!



Contact Us!

+813-894-5005

www.microtronai.com

West Bay View, Tampa, Florida,

33604

18